



Manual



<https://acuitypro.com>



<https://acuitypro.com/shop-acuity-pro>



info@acuitypro.com



Contents

Chapter One	3
Trademark and Copyright	3
System Requirements	3
Screen Resolution	3
Installation	4
Calibration	4
Remote Control Configuration and Troubleshooting.....	5
Chapter Two	8
Hot Keys and Features	8
Chapter Three	18
Hardware Set-Up Options.....	18
Dual Monitor Setup	18
Short Rooms.....	19
Chapter Four	20
Handy Tips	20
Adjusting Red/Blue, Red/Green for 4 Dot and Fixation Disparity.....	22
Macro Setup	22
Video Conversion Utilities.....	22
Chapter Five	23
ANSI Standards and Acuity Charts.....	23
Appendix	24
Hot Key Chart Summary	24
Digital Photos Included with Acuity Pro	25
License Agreement.....	26
Apache License	29
Quick Start Guide.....	32
Contact Information	33

Chapter One

Trademark and Copyright

The Acuity Pro® is a registered trademark of Acuity Pro, Inc. The Acuity Pro software and manual are Copyright © 1999-2021 Acuity Pro, Inc. Please review the license agreement prior to installation. A link to the Acuity Pro setup executable is provided by email with the activation key. If you have questions, refer to the FAQs at <https://acuitypro.com/faq>. You can also contact us by phone at (580) 243-1301, Monday – Friday, 8:00 am - 5:00 pm, Central Prevailing Time (CPT), or email technical support at info@acuitypro.com.

System Requirements

System requirements include a minimum of 4 GB of RAM, 1.5 GB free hard drive space, **Windows 10 or 8.1**, a video card with a resolution of 1024 x 768 or higher (1920 x 1080 recommended), a sound card and speakers, one available USB port for the remote receiver and a 20- inch diagonal or larger flat screen monitor. Using a television for the monitor is strongly discouraged - see Chapter 3. The table below shows monitor size as a function of optical distance (phoropter to monitor). Depending on exam room layout, you may also need a wall mount, extension cords for your monitor and keyboard, or a wireless keyboard.

Optical Distance	Absolute Minimum Screen Height
18 feet	7.5"
20 feet	8.5"
22 feet	9.5"
24 feet	10"

Screen Resolution

NOTE: If you are using a dual monitor system, you will need either two video cards or a dual head video card (recommended). Using monitors with different resolutions may impact image quality on the second monitor. If the computer supports HiDPI (e.g., 4k), all monitors must be set to the same scale setting. Different scale settings in multi-monitor environments are not supported.

Acuity Pro calibration is dependent on the display resolution. **Before** installing the program, verify the display is set to the recommended resolution. **We cannot stress this point enough** - the display resolution must be set properly **prior** to calibration to display the optotypes correctly.

To verify the display resolution is set to the recommended resolution, right click on the desktop and select the appropriate option for the version of Windows you are using:

Windows 8 - Select "Screen resolution"

Windows 10 - Select "Display settings"

Select the “Recommended” resolution from the dropdown list. If you are unable to use the correct resolution, quality of the program will be compromised. If you change the resolution, click on “Apply” to save. If there is a problem, check with your hardware supplier about upgrading your equipment.

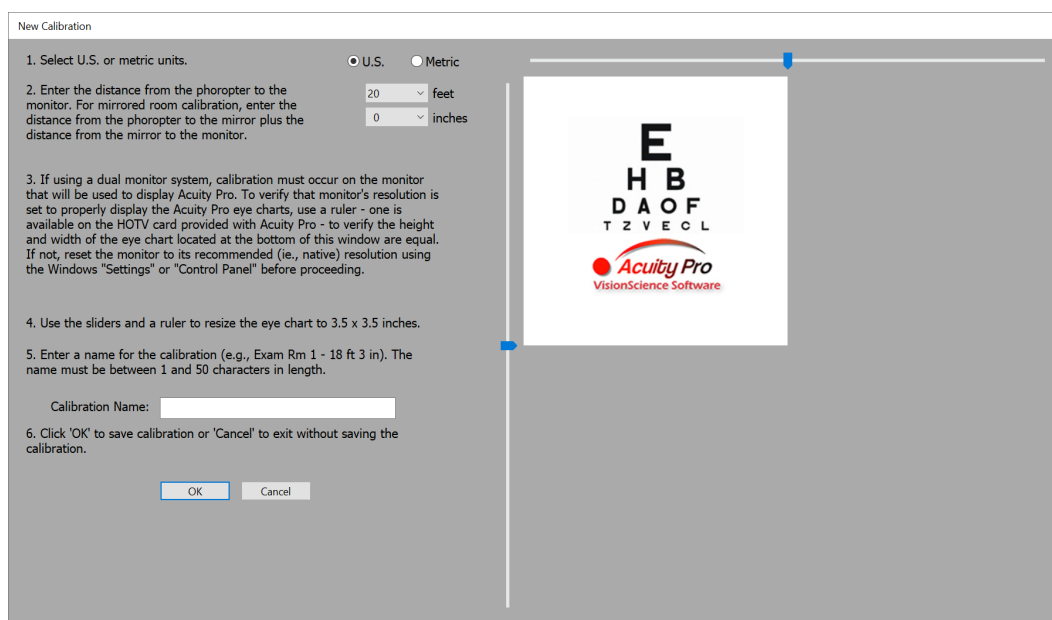
Installation

Refer to the Acuity Pro Ten Quick Start Guide located in the appendix.

Calibration

Acuity Pro must be calibrated to the phoropter-to-chart distance. The first time Acuity Pro runs, the New Calibration window will display (see Figure 1). If the monitor is replaced or the phoropter-to-chart distance changes, recalibration is required. For recalibration, the New Calibration window can be accessed by pressing the ‘H’ key and selecting ‘Calibrate.’ If two or more monitors are connected to the computer, calibration must be completed on the monitor Acuity Pro will be displayed on.

From the New Calibration window, select US or Metric units. Use the dropdown boxes to select feet and inches (or meters and centimeters) for the distance from phoropter to chart (note: if the lane is mirrored, the measurement will be the sum of the phoropter-to-mirror and the mirror-to-chart distances). Enter a name for the calibration. The purpose of the name feature is to allow switching between different commonly used testing distances (e.g., Acuity Pro is installed on a laptop and used in clinic, nursing home, and school screening settings). This will save time when switching between calibration distances. Use the mouse to adjust the sliders until the height and width of the acuity chart image is 3.5 x 3.5 inches (or 8.9 x 8.9 cm). The HOTV card that comes with Acuity Pro has a ruler on the back that can be placed flat on the screen to adjust the chart image size. Click “OK”.



Remote Control Configuration and Troubleshooting

Acuity Pro should automatically locate the IR receiver for the remote control when the app opens. If the receiver is disconnected or cannot be located, the following screen will display:

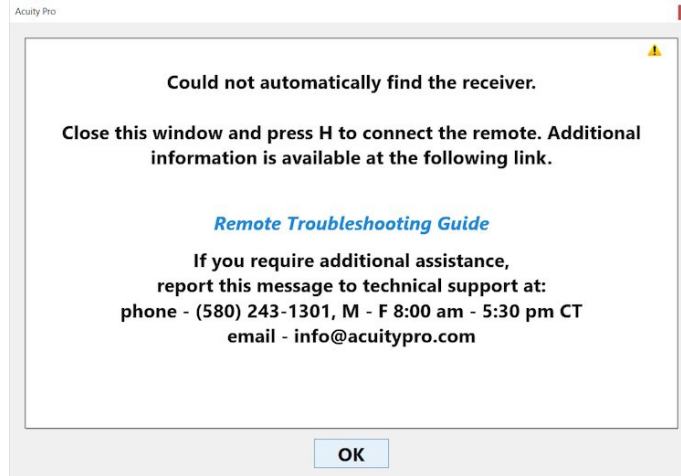


FIGURE 2 - ERROR CONNECTING REMOTE

If you plan to use the remote control, verify the receiver is connected to a USB port on the computer and that the front curved surface of the receiver has clear line-of-sight to the front of the remote control. Verify the **Auto Configure Remote** box is checked as shown in Figure 3 (press H, then select the Peripherals tab to access settings for the remote receiver). If you do not plan to use the remote control, select the **No Remote** box.

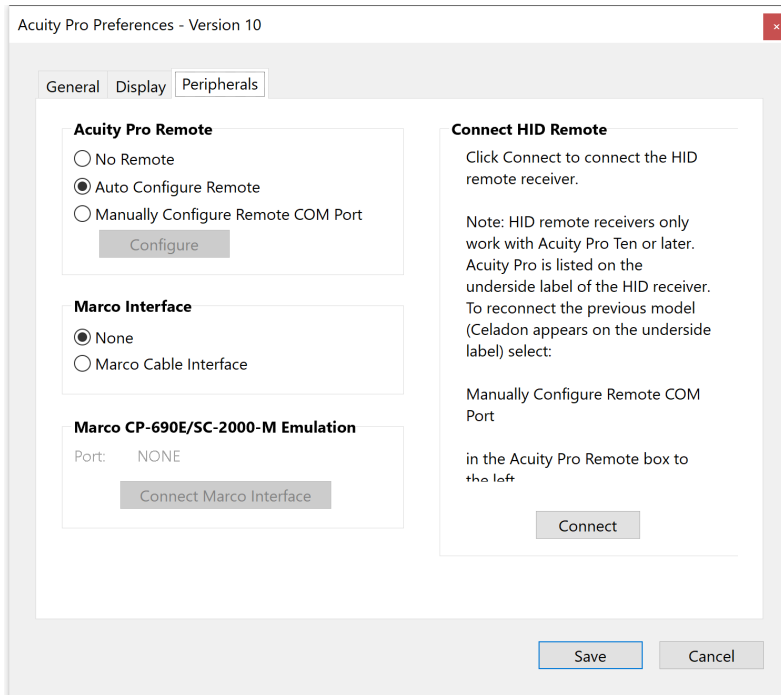


FIGURE 3 - ACUITY PRO PREFERENCES

There are two versions of the IR receiver:

1. The **USB serial receiver**, compatible with Acuity Pro Versions 7 – 10, has Celadon printed on the label on the underside of the receiver OR has an “**Acuity Pro v7 – 9**” label on top.
2. The **USB HID receiver**, compatible only with Acuity Pro Version 10, has Acuity Pro printed on the label on the underside of the receiver AND does NOT have an “**Acuity Pro v7 – 9**” label on top.

If Acuity Pro is unable to automatically configure the receiver, refer to the instructions below that are specific to your receiver.

USB Serial Receiver

Select Manually Configure Remote, then select the Configure button. The screen shown in Figure 4 will display. Use the arrow on the dropdown list to view COM port numbers assigned to connected serial devices.

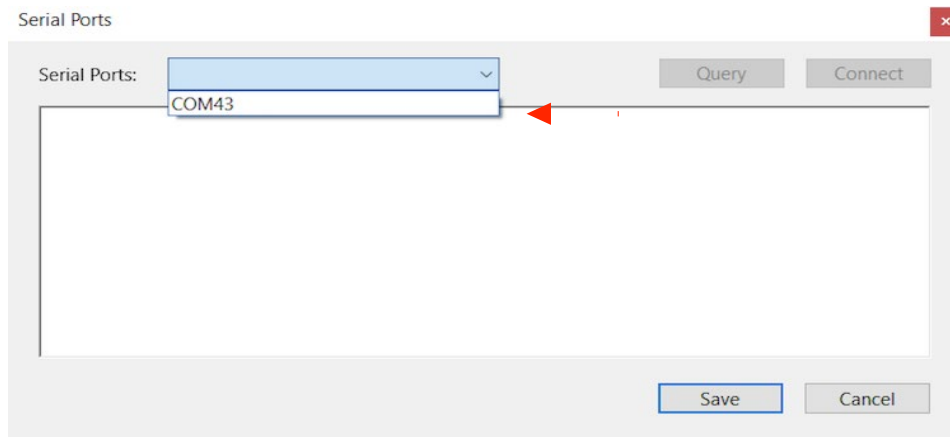


FIGURE 4 – CELADON REMOTE RECEIVER CONFIGURATION

If only one COM port is listed, use the mouse to select the port in the dropdown list and select Connect. A message should display stating the remote successfully connected as shown in Figure 5 on the next page. Select Save to exit.

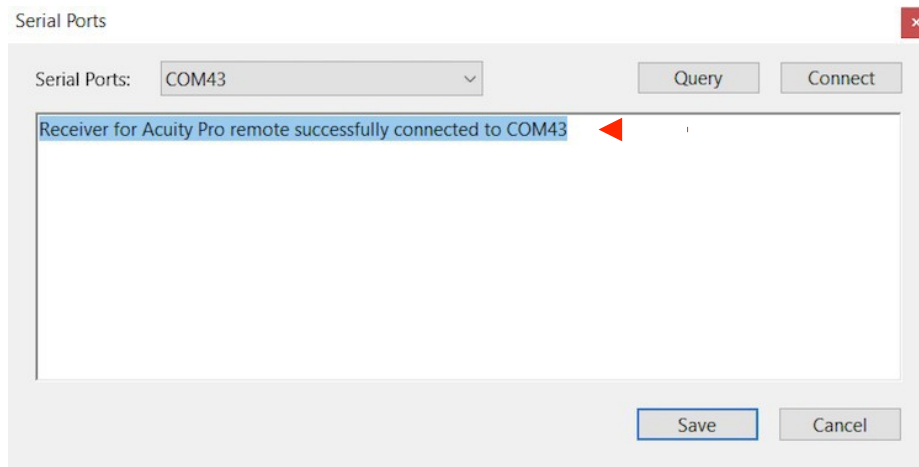


FIGURE 5 - REMOTE SUCCESSFULLY CONNECTED

If multiple ports are listed:

- Click on the Serial Ports dropdown list to display connected ports.
- Note the COM ports.
- Unplug the remote receiver and note which port disappears.
- Reconnect the remote receiver and note the port number that appears in the list. (This may not be the same port number that disappeared when the receiver was disconnected.)
- From the Serial Port dropdown list, select the COM port number that appeared when the remote receiver was reconnected to a USB port in Step 4.
- Select the Connect button.
- Verify the connection was successful.
- Select Save to exit.

If the remote is still not working, refer to the Acuity Pro Remote Troubleshooting Guide in the appendix.

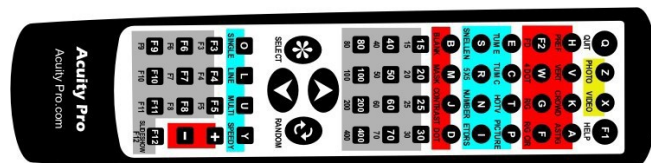
USB HID Receiver

Exit Acuity Pro. Plug the remote receiver into an available USB port on the computer. Reboot the computer. Restart Acuity Pro. If the remote is still not working, press H on the keyboard and use the mouse to select the Peripherals tab to access the settings for the remote control. Select the Connect button. A message should display stating the remote connected successfully.

Chapter Two

Hot Keys and Features

Acuity Pro comes with a 56-button remote control. Acuity Pro can also be controlled from the keyboard using a hot key system. Both methods allow access to nearly any chart or function with one button press or keystroke. The remote-control buttons are labeled with keyboard letters and have a short word description on the overlay. Pressing any button on the remote control is the same as pressing the corresponding key on the keyboard. For example, pressing the 'N' button on the remote control or keyboard, displays the Number optotype. Below is a graphic of the Acuity Pro remote.



One of the primary advantages of Acuity Pro is time saved during a refraction. This is one of the most time-consuming parts of an eye exam. Since charts can be changed quickly and randomized without turning around or standing up to adjust the projector, a significant time savings is achieved. In addition, by using randomization, refractions are more accurate. Acuity is tested - not memory! This is especially useful in low vision exams, contact lens exams, and refractive surgery and cataract surgery post-op visits.

The following is a list of Acuity Pro features:

F1 Help - From the main Acuity Pro chart window, press F1 for version information, a button to display the activation key, and a link to the on-line manual. Note: For a list of all hot keys, refer to the mouse pad or the back of the HOTV card.

F2 Fixation Disparity - with fusion lock, press the button again to toggle to Fixation Disparity without fusion lock. These charts are extremely useful when considering prescribing prism or to evaluate binocularity.

F3 White-on-Black/Black-on-White Chart Toggle – Toggle between white optotypes on a black background and black optotypes on a white background.

F4 Allen Symbols - The classic Allen optotype. Please note Acuity Pro includes more accurate illiterate charts including Patti Pics®¹, HOTV, Tumbling C, and Tumbling E.

¹Patti Pics® is a U.S. registered trademark of Precision Vision Inc. and are used under license from Precision Vision, Inc. The Precision Vision and Patti Pics® logos are © Precision Vision

F5 – F11 Hot Key Setup and Play - Macros/short cuts to hot key sequences are created with this utility. Select the 'H' button to display the Acuity Pro Preferences window, select the General tab, and then click the Hot Key Setup button. Click a function key on the remote graphic to assign a key sequence. Note: mouse over the function keys to view the current hot key sequence assignments.

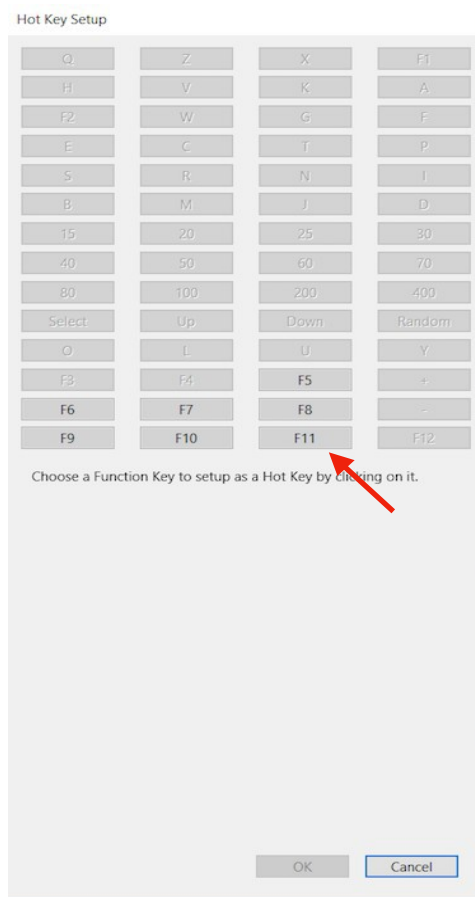


FIGURE 6 - HOT KEY SETUP

Follow the instructions to assign hot key sequences to a selected function key. More detailed instructions, as shown in Figure 7, are available by selecting the F1 key from the Hot Key Setup Window.

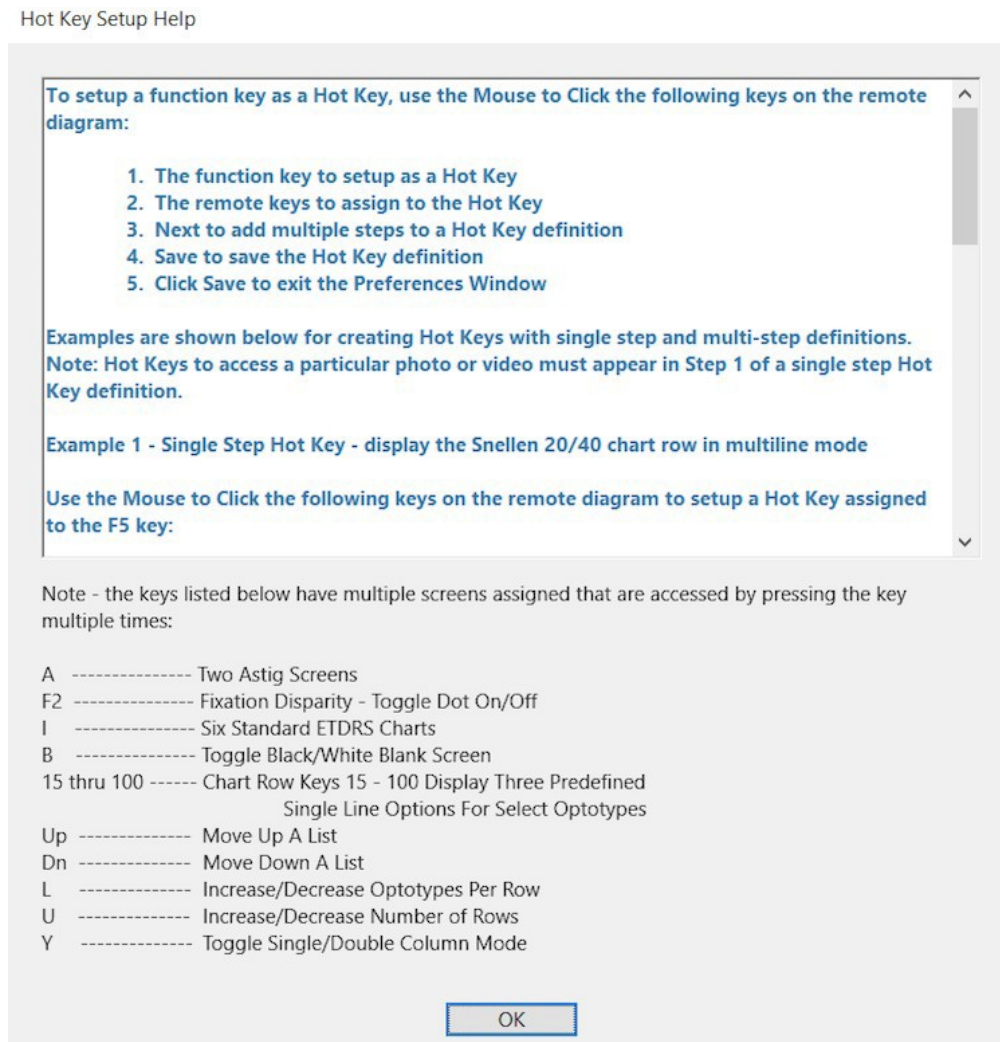


FIGURE 7 - HOT KEY SETUP HELP

After the function key is configured, select that key to play the assigned key stroke sequence. This is useful for displaying slide shows or playing favorite videos from a single key press. Other ideas for macros include features or functions that are specific to your exam style. For example, if 90 percent of your refractions begin with Sloan letters (5x5) in multirow format from 20/40 to 20/20, a function key can be assigned to a macro to display a Sloan chart with four rows starting with the 20/40 row. Select F1 from the Hot Key Setup Window for detailed instructions and examples.

F12 Slideshow Feature - Display available slideshows. Use the Up and Down arrow buttons to scroll through the available slideshows. Press the 'Select' button to play the selected slideshow. Press Q or Random (spacebar on the keyboard) to exit a slideshow.

Page Up & Up Arrow button - Increases the letter size by one Snellen (or LogMar - depending on selected chart units) size. Select optotypes can be displayed up to 20/800 depending on the size of the monitor. Scrolls up in the Slide, Video or Slideshow list.

Page Down & Down Arrow button - Decrease the letter size by one Snellen (or LogMar - depending on selected chart units) size. Scrolls down in the Slide, Video or Slideshow list.

0 through **8** keyboard & **15** through **400** remote - The numbers will take you to that Snellen size. For example, push 4 (keyboard or 40 remote) for a 20/40 row of letters. In multi-line mode, the number pushed will be the top row displayed. The remote buttons are self-evident. Here are the jump assignments for the keyboard:

0 - 20/400	3 - 20/30	6 - 20/60
1 - 20/100	4 - 20/40	7 - 20/70
2 - 20/20	5 - 20/50	8 - 20/80

+/- Increase/decrease contrast in the Variable Contrast Screen and increase/decrease size of the 4 Dot and Fixation Dot.

Spacebar - Randomize the currently displayed letter set - same as the 'Random' button on the remote.

A. Astigmatic clock dial chart and dot pattern chart. Press the 'A' key to display the clock dial, press the 'A' key again to display the dot pattern chart. The size of the dot pattern can be increased/decreased by pressing the +/- keys, respectively.

B. Blank screen - Some users want a totally dark exam room for certain tests; pressing the B will black out the screen. Pressing it again will display an all-white screen. Any other key will return to the eye chart.

C. Tumbling C or Landolt C chart - Used primarily for illiterate patients; have the patient tell whether the break in the wheel is up, down, left, or right or have them point their finger in the direction of the "broken" part.

D. Fixation Dot - For an easy to see large target, push the D button and get a big white dot on a dark screen. The dot size is variable by pressing + or - on the remote.

E. Tumbling E chart - Another illiterate chart; have the patient point or tell which direction the legs of the E or "table" are pointing.

F.Red/Green concentric circles. The size of the circles can be increased/ decreased by pressing the +/- keys, respectively.

G.Red/Green overlay. Use for red-green balance tests. Push the G button again to remove it.

H.Preferences - Press 'H' to display the Acuity Pro Preferences window. Figure 8 shows the configuration options available on the Display tab of the Acuity Pro Preferences window.

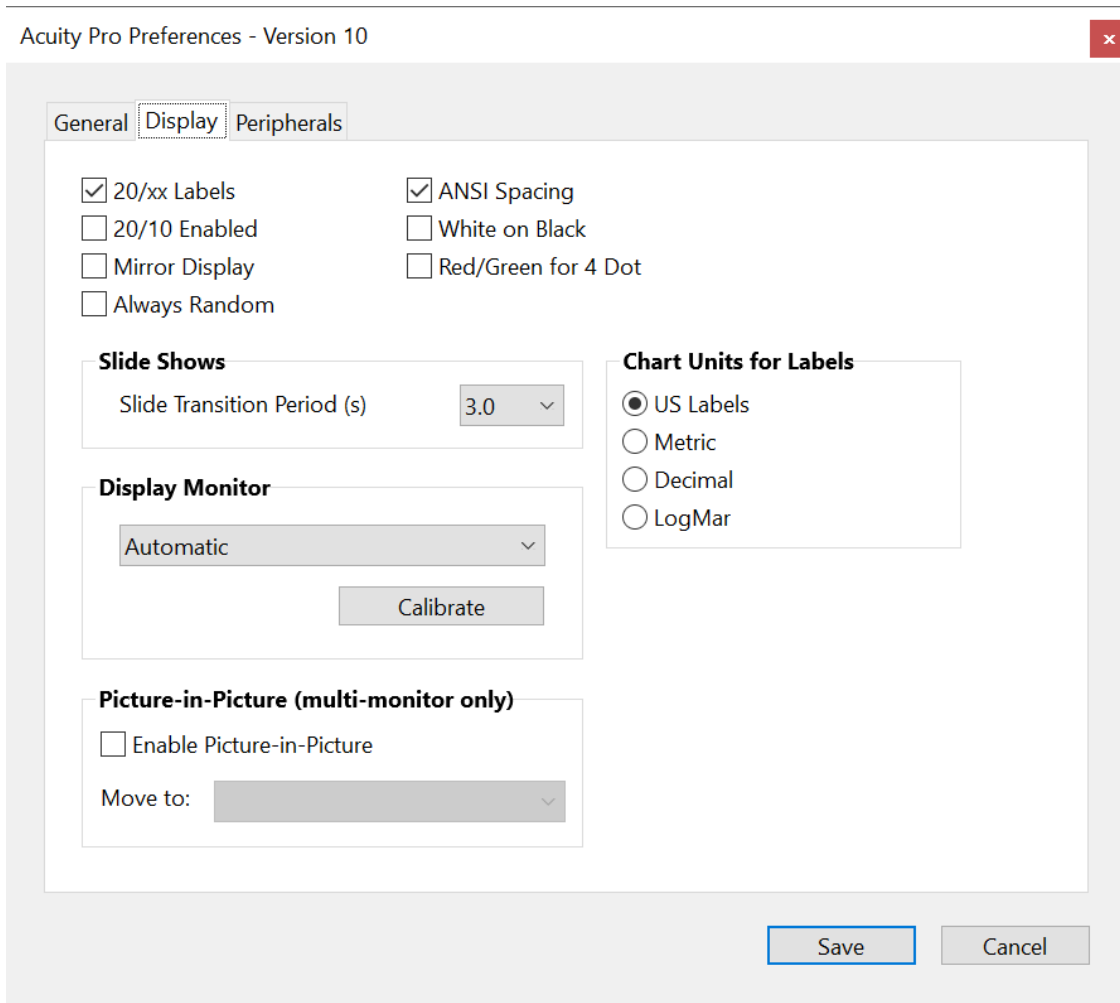


FIGURE 8 - ACUITY PRO PREFERENCES

If there is a change in lane distance or the Acuity Pro monitor is replaced, the chart can be recalibrated by clicking the Calibrate button on the Display tab (shown in Figure 8). Other configuration options include turning on/off chart labels, the 20/10 row, mirror display, always random, ANSI spacing, white-on-black chart display, and using red/green instead of red/blue for the 4 Dot chart. The transition period for slide shows, chart units, and picture-in-picture settings are also configured on the Display tab. Check for Updates, Hot Key Setup, and Media Setup options are

accessed from the General tab. If Acuity Pro needs to be installed on a different computer, the Deactivate option is on the General tab. Configuration options for the Acuity Pro Remote receiver and Marco interface box are on the Peripherals tab.

From the **Worth 4 Dot chart**, the H key is used to access the control panel for red/blue color adjustment for the 4Dot and Fixation Disparity charts (see [Adjusting Red/Blue Red/Green for 4 Dot and Fixation Disparity](#) for more information).

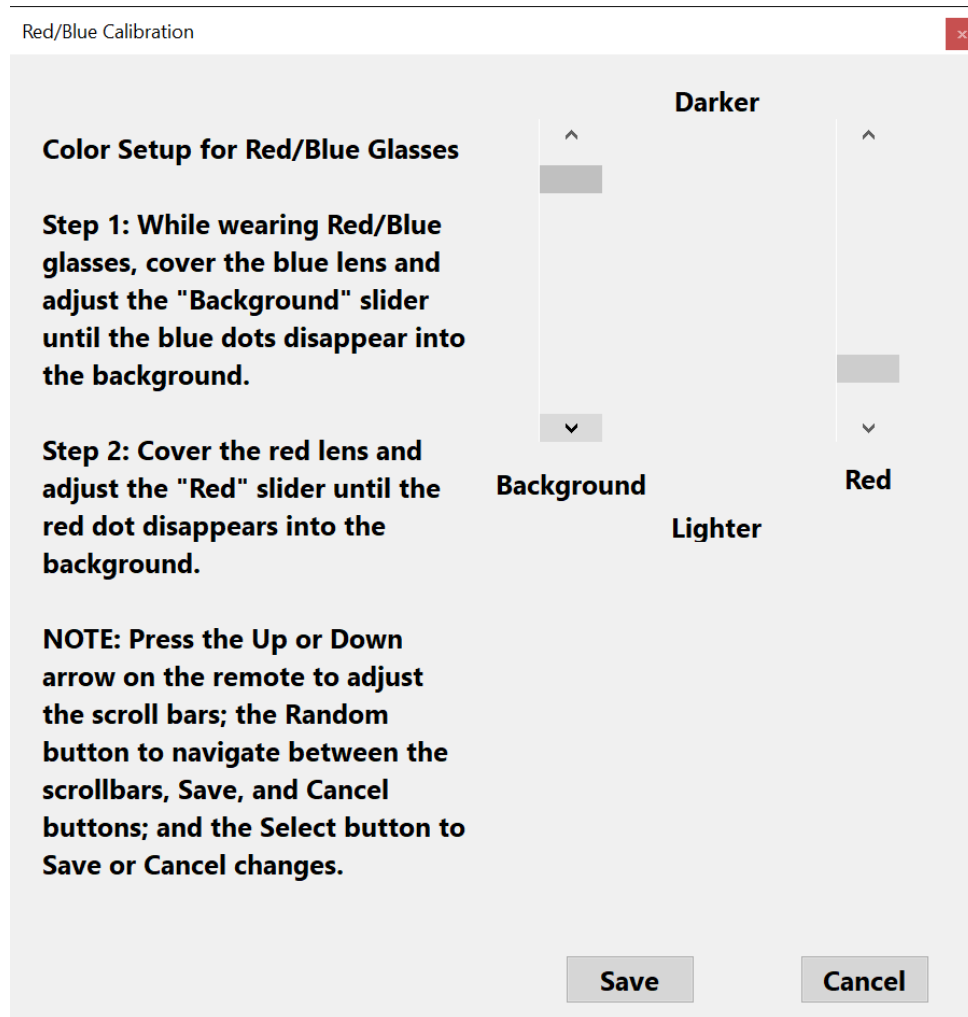


FIGURE 9 - RED/BLUE, RED/GREEN CALIBRATION

I. ETDRS charts - The ETDRS chart is displayed in LogMar units with Snellen equivalents displayed on the right. Press the I key repeatedly to cycle through the R, 1, 2, 1-2000, 2-2000, and 3-3000 ETDRS charts. The top row of the ETDRS charts is 20/200 as specified in the protocol defined by the National Institutes of Health.

The spacing between letters and lines is also defined by the ETDRS protocol. The Up and Down Arrows on the remote (or PgUp/PgDn keys on the keyboard) are used to scroll through the chart. To exit to another chart, press the chart specific button for that chart (e.g., press R to display the 5X5 Sloan chart).

Depending on monitor size, moving up the chart may result in the letters 'spilling off' the edge of the screen. There are two ways to increase the viewable area of the chart - purchase a larger monitor or shorten the patient distance. Displaying a complete ETDRS chart at a patient distance of 20 feet requires, at a minimum, a computer screen of 35 inches wide by 30 inches tall. Since this can be an expensive option, the most practical solution is to shorten the patient-to-chart distance. Please note, this option requires recalibration. (See **Calibration** on page 2 for instructions to save multiple calibrations.)

J. Contrast Sensitivity - This feature was created by Acuity Pro, Inc, specifically to address the need for a simple method to assess contrast sensitivity. It allows adjustment of the relative contrast of the optotype letter set from 0% to 30%. Press the J key to invoke this feature. To adjust the contrast, press the + or - key to increase or decrease the contrast of the letter set. The relative percent of contrast is briefly displayed in the upper left corner of the screen. Press J again to exit. Acuity Pro will save the percent of contrast setting and display at that percent of contrast next time the feature is accessed.

NOTE: This contrast is totally dependent on your monitor settings for brightness and contrast. We have no control over your monitor settings and room lighting. Therefore, we cannot guarantee 10% contrast is really 10% contrast on your equipment and in your room. We also do not have control of your patient's pupil size, which is perhaps the most influential in affecting contrast sensitivity measurements. But, by providing a variable contrast option, you can test a given contrast setting from visit to visit in the same clinical setting and document whether any reduction in contrast sensitivity is occurring.

K. Crowding Bars - The bars are used for checking acuities in amblyopic patients. Press the 'K' button to invoke the bars. If the chart is displayed in single or multi-line mode, the screen will change to a single letter display. To remove the bars, press K again.

L. Line display - Displays a single line of the optotype. Press L again to reduce the number of characters on the line - repeat down to a minimum of 2 characters per line. Continuing to press L will increase the characters per line up to a full line. Acuity Pro will save the last setting used.

LogMar Units. - There is no hot key for this function. Press 'H' to access the Acuity Pro Preferences window and click on the radio button labeled 'LogMar' to display with LogMar spacing and units. See Figure 10.

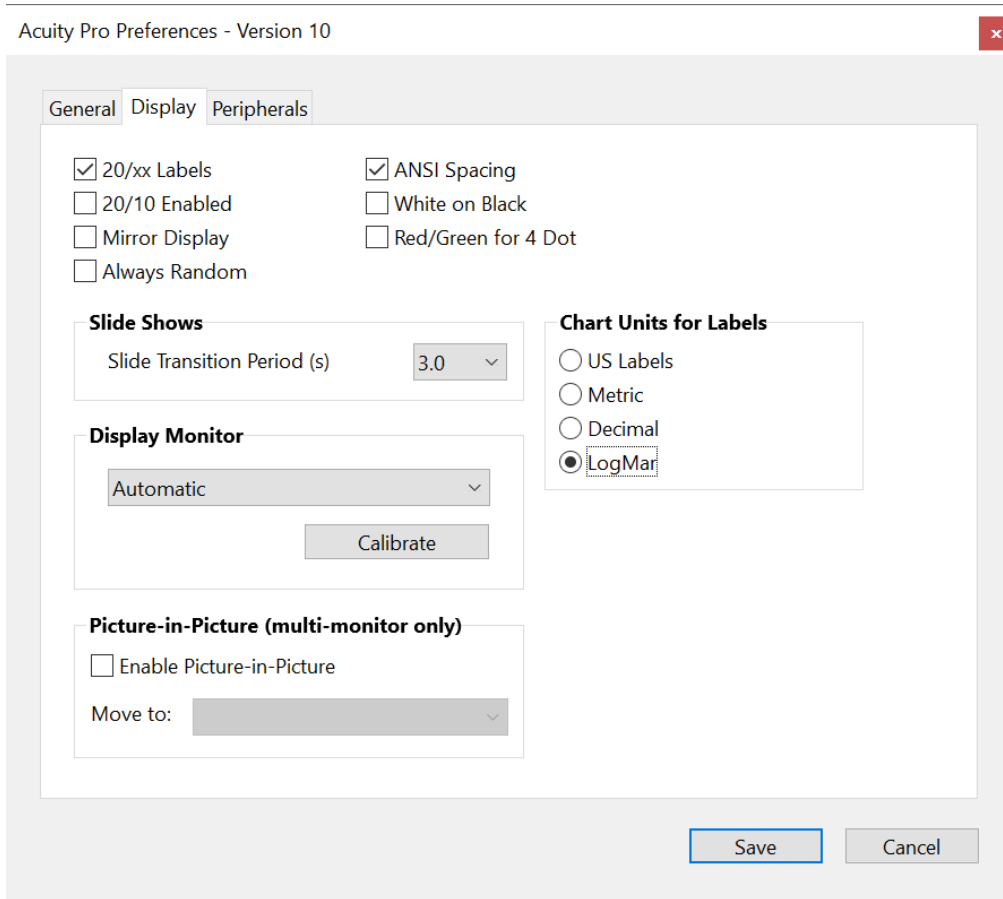


FIGURE 10 - LOGMAR UNITS AND MIRROR DISPLAY

M.Mask Mode. This feature allows a black mask to surround a line of letters or a single letter. The single letter option can be used for dissociated phorias, vertical and lateral.

Mirror Mode - There is no hot key for this feature. Press H to display the Acuity Pro Preferences window and click the check box labeled Mirror Display to reverse the charts for a mirrored room. See Figure 10.

N.Number Optotype - An illiterate chart option.

O.One (single letter display) - This feature can be used as a fixation target or to check acuity for a patient who has difficulty with multiple letters. Single letter display works with all optotypes.

P. Picture chart - The Patti Pics®¹ pediatric chart. Note: The Allen symbols are still available via the **F4** key.

Q. Quit and EXIT

QUIT Feature - To quit Acuity Pro, press Q. **NOTE: It is a best practice to exit Acuity Pro by pressing Q. Otherwise, changes to preferences will not be saved.**

EXIT Feature - If you are in the photo gallery, slideshow, or video option, Exit and return to the eye chart by pressing Q or Random on the remote control (spacebar on the computer).

R. 5 x 5 Sloan Letters – Press the R button to change to the 5x5 optotype. This is a 5x5 height to width optotype with 10 different letters. This is the optotype set used for ETDRS charts.

Spacebar/Random - Randomize display. Anytime you suspect you are checking memory and not acuity, press the Random button (or spacebar on keyboard) for a random set of letters. Remember the random button works in all charts and creates totally random charts.

S. Snellen Chart - Press S to select the Snellen chart.

T. HOTV Chart - Press T to select the HOTV chart. This illiterate chart defaults with crowding bars. The patient will hold the HOTV card, included with the Acuity Pro license, in one hand and point with the other. Unless someone holds an occluder, the patient needs to be patched, which is the preferred method.

Tip: Start with large letters and practice having the patient point to the letter on the HOTV card that matches the letter on the screen. Single letter mode works best for this test.

U. Multi-line function. Press U to select multi-line chart display. Depending on the size of the acuity rows being displayed, this feature allows as many as 4 rows to be displayed at once. Press U again to reduce to 3 rows and again to reduce to 2. When 2 rows are displayed, pressing U will increase the number of rows. This function works with all charts.

V. Vertical line of 20/40 letters.

¹Patti Pics® is a U.S. registered trademark of Precision Vision Inc. and are used under license from Precision Vision, Inc. The Precision Vision and Patti Pics® logos are © Precision Vision.

W. Worth 4 dot – Use red/blue or red/green glasses or filter to check for diplopia and suppression.

To adjust the size of the dots to better assess suppression, press the + or - keys. The Red/Green filters in the phoropter can be used instead of the red/blue glasses by checking the box located on the Acuity Pro Preferences Window Display tab entitled Red/Green for 4 Dot.

NOTE! It is IMPERATIVE that the red/blue color scheme be adjusted prior to using this feature with patients. Since we have no control over your computer equipment quality, we have provided a way to achieve maximum 'block' of the red/blue images from within Acuity Pro (see section H, [Figure 9](#)).

X. Video Player Setup & Play – Acuity Pro provides the capability to play videos without exiting the acuity chart. Animation clips are included for use as fixation targets during pediatric retinoscopy. In addition, videos can be used for informed consent compliance or to show a video clip of a surgical procedure.

To search for a video, press X (Video button) then the Down Arrow or the Up Arrow (PgDn or PgUp key on the keyboard) to scroll through the directories in alphabetical order. Press Select (Return or Enter on the keyboard) to open a directory. Scroll up or down through the titles. Press Select to play a video. To exit press Randomize or Q. Acuity Pro comes with a clip from Lacrimedics (showing a punctal plug insertion procedure), a custom pediatric video, and several Looney Tune cartoons.

See Chapter 4 for details on how to import videos.

Y. Speedy Acuity. This feature was added due to requests from many doctors. By pressing the 'Y' button, a single column of letters in descending size will be displayed. To jump down or up in size, press the Down Arrow or Up Arrow. Press the 'Y' button again for a two-column display.

Z. Digital Photo - The Digital Photo Gallery (DPG) is one of the most useful and educational tools in your office.

Acuity Pro comes with 50 pathology slides and provides a mechanism to import any number of images (see Chapter 4 for details). A listing of the images included with Acuity Pro is in the appendix of this manual. To access this feature press Z. To access any photo in the library using the remote control, press the Up Arrow or Down Arrow to search through the directory list. The directories are organized by topic. Once the desired topic is located, press the Select button and the titles for that topic will be listed. Use the Up Arrow and Down Arrow to navigate to a photo and press Select. The photos in the DPG are copyrighted and cannot be used in any other format or program. We are grateful to the NSU Oklahoma College of Optometry and the National Eye Institute for the photos and diagrams included with Acuity Pro.

Chapter Three

Hardware Set-Up Options

There are various set-up options for the Acuity Pro system. These set-up options are dependent on room length and arrangement of equipment. In a non-mirrored room, the monitor may be a fair distance from the doctor and patient. If a monitor extension cable is required, purchasing a high-quality cable is strongly recommended. Inferior quality video cables may cause ghosting of the images.

In a mirrored room, the monitor will be mounted above and behind the patient. **Verify the near point rod on the phoropter does not block the view of the monitor.** The monitor will need to be mounted slightly off center if this is a problem.

If a keyboard is preferred to control Acuity Pro, a wireless keyboard is recommended. This is a good solution for cable management and makes keyboard placement possible in a variety of locations. The best wireless keyboard is one that includes a touch pad. This eliminates the need for a separate wireless mouse and allows the keyboard to be used anywhere in the room.

Monitor choice was discussed in Chapter One but a few other comments may be relevant. We do not recommend using an LCD TV for a monitor because many video cards do not support the screen resolutions required for the TV and many TVs “stretch” the image to fill the width of the screen.

When purchasing a flat screen, verify it is wall mountable. For audio from videos to be broadcast from the direction of the monitor, a monitor with built-in speakers is recommended. Please note that not all video cables can carry audio. Verify with the vendor prior to purchase. Cables can be hidden in the wall by placing a hole near the wall mount and another near the floor (please consult with a licensed professional for guidance). Cover plates can also be used to provide a finished look.

Using a laptop provides the flexibility for out-of-clinic use including school and sports screenings, nursing home visits, and health fairs.

Dual Monitor Setup

Acuity Pro does not require a dedicated computer. If the exam room computer has a dual head video card, a different program can be displayed on each monitor. For example, the desk monitor can display the digital imaging system or electronic health records software and a monitor at the end of the room can display Acuity Pro. Dual monitors are configured through Windows Settings->System->Display. Your IT support is the recommended resource for setting up dual monitor systems.

Short Rooms

Many doctors ask how short rooms affect refractions when deciding to setup exam rooms as straight or mirrored rooms. Only light coming from an infinitely distant source is parallel. Light coming from a source any closer than infinity is divergent light. When trying to determine the refractive error of a patient, should the reading in the phoropter be prescribed or should that measurement be altered based on the patient distance to the chart? If spectacle lenses have a 1/8 diopter tolerance and we cannot prescribe but in 1/4 diopter steps, then we only need to be concerned about room distances that have more than 1/8 diopter of divergence light from the target source, the eye chart. For clinical purposes, 20-foot rooms have always been considered “optical infinity” but if you do the math, a 20-foot room has a stimulus to accommodation of .164 diopter. In other words, the light is diverging from a 20-foot source at .164 diopter. You should add .164 diopter of minus (less plus) to all your phoropter readings to be totally exact in prescription. However, since .164 diopter is less than 1/4 diopter, and that is the least change we can make in spectacle prescriptions, most doctors prescribe directly from the phoropter. Since .164 diopter is greater than 1/8 diopter, you would be less in error if you made the 1/4 diopter adjustment.

Reference the table below to determine how room distance affects final prescription.

Optical Distance	Divergence of light
20 feet	.164 diopter
16 feet	.205 diopter
14 feet	.234 diopter
12 feet	.273 diopter
10 feet	.328 diopter
8 feet	.41 diopter

There is nothing wrong with using short rooms with direct viewing of acuity charts, just remember to adjust refractions by the appropriate amount.

Chapter Four

Handy Tips

To prevent the monitor from going to sleep during an exam, set power settings from the Windows 10 Control Panel->Power Options->Change plan settings. Set **Turn off the display** and **Put the computer to sleep** to a reasonable period (e.g., 2 hours).

Room illumination is no longer an issue with digital acuity systems. Most doctors prefer to leave the room lights fully on. This more closely represents everyday lighting, which makes refractions more accurate. Read the chapter on ANSI standards for details about luminance, contrast, and color temperature of monitors and acuity presentation.

Import Images and Videos - Images must be in JPG format with a minimum resolution of 800x600 and in that ratio (Acuity Pro images are 1024 x 768). Videos must be in a format supported by Windows Media Player. From the remote or keyboard, select H. From the Acuity Pro Preferences window select the **Photo/Video Setup** button to display instructions for importing photos and videos (see Figure 11).

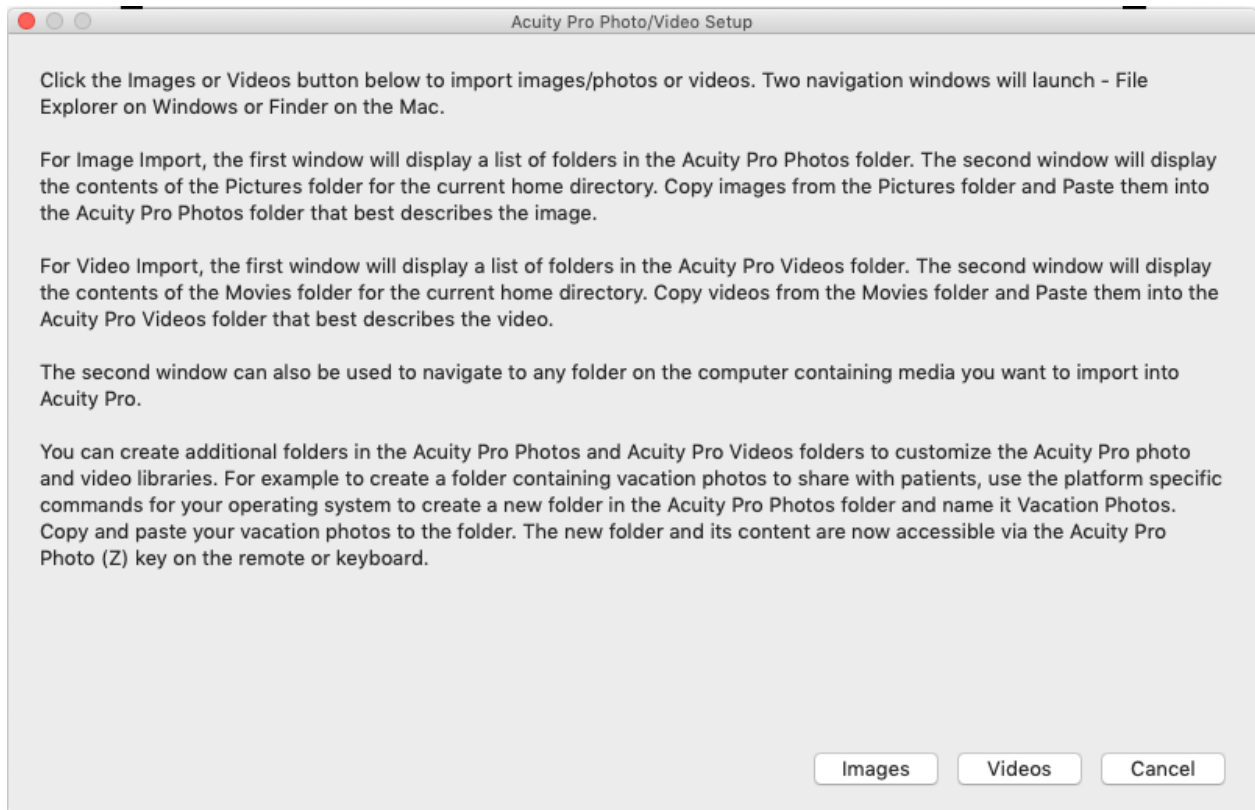


FIGURE 11 - ACUITY PRO PHOTO/VIDEO SETUP

When finished, close the navigation windows.

Photos and videos can be added from your personal photo/video collection, imaging systems, or scanned images. Please respect and comply with all copyright laws when using images for which you do not own the copyright. **All Acuity Pro photos are copyrighted and cannot be used outside Acuity Pro without express written permission from Acuity Pro, Inc.**

Play a Slideshow - Acuity Pro Ten allows users to import an infinite - within the constraints of available hard drive space - number of slideshows. All slide show files must be in JPG format. Pathology slide shows and a sample promotional slide show are included with Acuity Pro. Suggestions for custom slide shows include incorporating fixation slides for children, vacation slides, practice promotional slides, etc., into custom slide shows. To start a slide show, press **F12**. This will display all available slideshows. Press the **Up Arrow** or **Down Arrow** to scroll through all available slide shows. Press **Select** to start the slide show. To stop the slide show and return to the acuity chart, press **Randomize** or **Q**.

Think of slide shows as on-demand screen savers. After the refraction, instead of leaving a boring screen full of letters, click on a slide show of eye path photos, vacation slides, or practice promotion slides.

Built in Pointer - This is useful when working with children by allowing you to point at a single letter in the C or E chart or in the photo gallery for pointing out specific details in the pathology slides. Move the mouse pointer to the monitor displaying Acuity Pro and click with the left mouse button. The mouse pointer will toggle between the mouse pointer and the arrow pointer.

Back-up Acuity System – A back-up acuity system is recommended for use in an emergency, such as a computer or hard drive crash. One of the advantages of Acuity Pro over most All-In-One Digital Acuity Systems is the ability to download Acuity Pro from the URL you received via email at time of purchase, install and setup Acuity Pro in demo mode on another computer, and you are ready to go. Acuity Pro will run in demo mode for up to one week. Please call (580) 243-1301 or email info@acuitypro.com to have the activation key reset for the new computer prior to demo-mode timing out.

Another best practice is to have the Acuity Pro Digital Acuity System on a **battery back-up** (UPS). The UPS should be large enough to handle the computer and monitor. One or two-second power outages can cost several minutes of re-boot time. Use of a UPS with surge protection can also extend the life of the computer and monitor.

Adjusting Red/Blue, Red/Green for 4 Dot and Fixation Disparity

The calibration screen ([Figure 9](#)) for the 4-dot and fixation disparity tests is accessed by pressing **H** from the 4-dot test window. The purpose of the calibration is to adjust the red/blue color scheme of your monitor to achieve maximum color block while wearing the red/blue glasses. This is particularly important if you utilize these screens.

The Red/Green filters in the phoropter can be used instead of the red/blue glasses by checking the **Red/Green for 4 Dot** box located on the Acuity Pro Preferences Window Display tab.

NOTE: Setting monitor Brightness and Contrast at about 30% each and setting RED, BLUE, and GREEN screen colors at about 75% seems to be a good starting point. Monitor brightness and screen colors are set by physical controls on your monitor, not through software. Read your monitor manual for details.

Macro Setup

See Chapter Two under '**F5-F11**' for complete details.

Video Conversion Utilities

There are free utilities for video and photo processing to convert between video formats and to reverse videos for mirrored rooms. As these programs are continually changing, we suggest doing a quick search to find one appropriate for your needs.

Chapter Five

ANSI Standards and Acuity Charts

There are 3 major features that apply to electronic eye charts. ANSI states that luminance should be between 80 - 320 lumens/m². Virtually all modern LCD flat screen monitors are rated at 300 lumens/m² or better. If the brightness of the monitor is set at 50%, it will be well within the stated ANSI standards for luminance. Contrast is stated in ANSI to be no less than 85%. All modern LCD monitors are rated at 300:1 contrast ratio or better, many now exceed 700:1. This is well above the 85% requirement. The other important ANSI standard is Color Temperature. Color temperature is how white the white is on the screen. As specified in ISO 8596, White light within a color temperature range of 2,500K to 7,000K shall be used for luminance of eye charts. Microsoft & Hewlett Packard established a standard for all modern displays which they called sRGB or "average summer daylight". It is 6500 degree K. All modern LCD monitors have color temperature settings that let you choose between this standard of 6500 K and others. Make sure you set your monitor on the 6500 degree K setting. Even though the ISO standard is wide, choice of the 6500K temperature setting will give you the most natural looking white according to Microsoft and Hewlett Packard. Lower temperature settings look yellowish and higher look bluish. We recommend, to the extent possible, to maintain monitor settings at factory default.

Appendix

Hot Key Chart Summary

F1 - Help

F2 - Fixation Disparity w/wo Fusion Lock

F3 - White-on-Black toggle

F4 - Allen Symbols

F5 - F11 - User Defined

F12 - Slide Shows

PgUp - Increase Optotype Size/ Scroll up through photo, video or slideshow titles

PgDn - Decrease Optotype Size by One Step/ Scroll down through photo, video or slideshow titles

Spacebar - Randomize Display

1 - 20/100

2 - 20/20

3 - 20/30

4 - 20/40

5 - 20/50

6 - 20/60

7 - 20/70

8 - 20/80

0 - 20/400

A - Astigmatic Chart

B - Blank Screen

C - Tumbling 'C' Chart

D - Fixation Dot

E - Tumbling 'E' Chart

F - Red/Green Circles

G - Red/Green Overlay

H - Preferences

I - ETDRS Charts

J - Contrast Sensitivity

K - Crowding Bars

L - Single Line Display

M - Mask

N - Number Chart

O - One Letter Display

P - Picture Chart

Q - Quit or Exit Current Screen

R - 5x5 Sloan Chart

S - Snellen Chart

T - HOTV Chart

U - Multi-Line Display

V - Vertical Line of Letters

W - 4 Dot Test

X - Video Player

Y - Speedy Acuity

Z - Photos

+ Increase Contrast on Contrast Sensitivity Chart, Increase dot size on 4 Dot test

- Decrease Contrast in Contrast Sensitivity Chart, Decrease dot size on 4 Dot test

Digital Photos Included with Acuity Pro

Abrasion, Corneal	HSV Keratitis
Ant Chamber IOL	Hypertensive Retinopathy
Arcus	Jelly Bumps
ARMD	Keratoplasty
ARMD 2	Laser Iridotomy
Asteroid	Macular Hole
Buried Drusen	Myelination
Capsular Pigment	NVD
Cataract Cortical	Persistent Pupillary Membrane
Cataract Nuclear	Pinguecula
Cataract PSC	POHS
Chorodial Nevus	Posterior Synechia
Concretions	Pterygium
Corneal Foreign Body	Punctal Plug
Corneal Infiltrate	PVD
Corneal Ulcer	Pyogenic Granuloma
Diabetic Retinopathy	Retinal Detachment
Diabetic Retinopathy 2	RK
Drusen	RPE
Episcleritis	Hypertrophy of RPE
Epithelial Ingrowth	SPK
Eye Diagram	Swollen Disk
Glaucoma	Tortuous Vessels
GPC	Viral Conjunctivitis
Hollenhorst Plaque	YAG Capsulotomy

License Agreement

Acuity Pro, Inc. End User License Agreement

PLEASE READ CAREFULLY: THE USE OF THIS SOFTWARE IS SUBJECT TO THE SOFTWARE LICENSE TERMS OF ACUITY PRO, INC. AND OTHER LICENSORS WHOSE SOFTWARE MAY BE BUNDLED WITH THIS PRODUCT. BY YOUR USE OF THE SOFTWARE INCLUDED WITH THIS PRODUCT YOU AGREE TO THE LICENSE TERMS REQUIRED BY THE LICENSOR OF THAT SOFTWARE, AS SET FORTH BELOW. IF YOU DO NOT AGREE TO THE LICENSE TERMS APPLICABLE TO THE SOFTWARE, YOU MAY RETURN THE ENTIRE UNUSED PRODUCT TO THE SOURCE FROM WHICH YOU OBTAINED IT.

Acuity Pro, Inc., Software License Agreement (Single User, Non-Networked Applications)

In return for acquiring a license to use the Acuity Pro, Inc., software, which may include software from third party licensors and patches made available by Acuity Pro, Inc., ("Software"), and the related documentation, you agree to the following terms and conditions:

1. **License.** This Agreement grants you, the Licensee, a license to: (a) use the Software on a single computer system, which is not intended for ANYONE OTHER THAN ORIGINAL PURCHASER, OWNER OF SOFTWARE. Notwithstanding the foregoing, the Software may be installed only on computers owned by the licensee As used in this license, the Software is "in use" when it is either loaded into RAM or installed on a hard disk or other permanent memory device. (Different license terms and fees are applicable for networked or multiple user applications.) As a specific condition of this license, you agree to use the Software in compliance with all applicable laws, including copyright laws, and that you will not copy, transmit, perform or distribute any graphic or other content using the Software without obtaining all necessary licenses or permissions from the owner of the content.
2. **Restrictions.** YOU MAY NOT MODIFY, ADAPT, TRANSLATE, RENT, LEASE, LOAN, RESELL FOR PROFIT, DISTRIBUTE, NETWORK OR CREATE DERIVATIVE WORKS BASED UPON THE SOFTWARE OR ANY PART THEREOF. Acuity Pro, Inc., will have the right to terminate our license immediately if you fail to comply with any term or condition of this Agreement. Upon any termination, including termination by you, you must destroy the Software (including the related documentation), together with all copies or modifications You may not distribute copies of the Software to others or electronically transfer the Software from one computer to another over a network. You may not post or otherwise make available the Software, or any portion thereof, in any form, on the Internet. You may not use the Software in a computer service business, including in time sharing applications. The Software contains trade secrets and, in order to protect them, you may not decompile, reverse engineer, disassemble, or otherwise reduce the Software to a human-perceivable form.
3. **Ownership of Software.** As Licensee, you own the media upon which the software is recorded or fixed, but Acuity Pro, Inc., and its licensors retain title and ownership of the Software recorded on the original media and all subsequent copies of the Software, regardless of the form or media in which or on which the original and other copies may exist. This license is not a sale of the Software or any copy. In the event of a practice ownership change from original Software License purchaser to a new practice ownership the following will apply: the new practice owner may change the Registration Name for a one time fee and all services from the original license purchaser (when the above circumstances occurs) will be transferred to new practice ownership.
4. **Confidentiality.** You agree to maintain the Software in confidence and that you will not disclose the Software to any third party without the express written consent of Acuity Pro, Inc.

You further agree to take all reasonable precautions to preclude access of unauthorized persons to the Software.

5. Term. This license is effective until January 1, 2045, unless terminated earlier. You may terminate the license at any time by destroying the Software (including the related documentation) together with all copies or modifications in any form. Acuity Pro, Inc., will have the right to terminate our license immediately if you fail to comply with any term or condition of this Agreement. Upon any termination, including termination by you, you must destroy the Software (including the related documentation), together with all copies or modifications in any form.

6. Limited Warranty. Acuity Pro, Inc., and its Licensors warrants only that the Software will perform substantially in accordance with the accompanying written documentation for a period of thirty (30) days from the date of your purchase receipt. ACUITY PRO, INC., AND ITS LICENSORS DO NOT AND CANNOT WARRANT THE RESULTS YOU MAY OBTAIN BY USING THE SOFTWARE OR DOCUMENTATION. THE FOREGOING STATES THE SOLE AND EXCLUSIVE REMEDIES ACUITY PRO, INC., AND ITS LICENSORS WILL PROVIDE FOR BREACH OF WARRANTY. EXCEPT FOR THE FOREGOING LIMITED WARRANTY, ACUITY PRO, INC., AND ITS LICENSORS MAKE NO WARRANTIES, EXPRESSED OR IMPLIED, INCLUDING, BUT NOT LIMITED, AS TO NON- INFRINGEMENT OF THIRD PARTY RIGHTS, MERCHANTABILITY OR FITNESS FOR A PARTICULAR PURPOSE. Some states do not allow the exclusion of implied warranties or limitations on how long an implied warranty may last, so the above limitations may not apply to you. This warranty gives you specific legal rights and you may also have other rights which vary from state to state.

7. The entire liability of Acuity Pro, Inc., and its Licensors, and your exclusive remedy for a breach of this warranty, shall be: (a) the replacement of any Software not meeting the above limited warranty which is returned by you; or (b) if Acuity Pro, Inc., or its distributor is unable to deliver replacement Software you may terminate this Agreement by returning the Software within thirty (30) days from the date of your purchase receipt and your money will be refunded.

8. Limitation of Liability. IN NO EVENT WILL ACUITY PRO, INC., OR ITS LICENSORS BE LIABLE TO YOU FOR ANY INCIDENTAL, CONSEQUENTIAL OR INDIRECT DAMAGES, INCLUDING ANY LOST PROFITS, LOST SAVINGS, OR LOSS OF DATA, EVEN IF ACUITY PRO, INC., OR A LICENSOR HAS BEEN ADVISED OF THE POSSIBILITY OF SUCH DAMAGES, OR FOR ANY CLAIM BY ANY OTHER PARTY. Some states do not allow the exclusion or limitation of special, incidental, or consequential damages, so the above limitation or exclusion may not apply to you.

9. Export. You acknowledge that the laws and regulations of the United States and other countries may restrict the export and re-export of the Software. You agree that you will not export or re-export the Software or documentation in any form in violation of applicable United States and foreign law.

10. Government Restricted Rights. The Software is subject to restricted rights as follows. If the Software is acquired under the terms of a GSA contract: use, reproduction or disclosure is subject to the restrictions set forth in the applicable ADP Schedule contract. If the Software is acquired under the terms of a DoD or civilian agency contract, use, duplication or disclosure by the Government is subject to the restrictions of this Agreement in accordance with 48 C.F.R. 12.212 of the Federal Acquisition Regulations and its successors and 49 C.F.R. 227.7202-1 of the DoD FAR Supplement and its successors

11. General. You acknowledge that you have read this Agreement, understand it, and that by using the Software you agree to be bound by its terms and conditions. You further agree that it is the complete and exclusive statement of the agreement between Acuity Pro, Inc., and you, and

supersedes any proposal or prior agreement, oral or written, and any other communication between Acuity Pro, Inc., and you relating to the subject matter of this Agreement. No additional or any different terms will be enforceable against Acuity Pro, Inc., unless Acuity Pro, Inc., gives its express consent, including an express waiver of the terms of this Agreement, in writing signed by an officer of Acuity Pro, Inc. You assume full responsibility for the use of the Software and agree to use the Software legally and responsibly. This Agreement shall be governed by Oklahoma law, except as to copyright matters, which are covered by Federal law. This Agreement is deemed entered into at Elk City, Oklahoma by both parties. Should any provision of this Agreement be declared unenforceable in any jurisdiction, then such provision shall be deemed severable from this Agreement and shall not affect the remainder hereof. All rights in the Software not specifically granted in this Agreement are reserved by Acuity Pro, Inc.

Should you have any questions concerning this Agreement, you may contact Acuity Pro, Inc., by writing to:

Acuity Pro, Inc.
Legal Department
PO Box 1045
Elk City, Oklahoma 73648

Third Party Graphics:

Patti Pics® is a U.S. registered trademark of Precision Vision Inc. and are used under license from Precision Vision, Inc. The Precision Vision and Patti Pics® logos are © Precision Vision.

Third Party Software:

Acuity Pro Version 10 contains derivative works from DrawSVG © Zoclee, which is subject to the Apache License. All modifications of DrawSVG included herein are

Copyright 2018 - 2021 Acuity Pro, Inc.

Derivative works from DrawSVG are Licensed under the Apache License, Version 2.0 (the License); you may not use this file except in compliance with the License. You may obtain a copy of the License at

<http://www.apache.org/licenses/LICENSE-2.0>

Unless required by applicable law or agreed to in writing, software distributed under the License is distributed on an "AS IS" BASIS, WITHOUT WARRANTIES OR CONDITIONS OF ANY KIND, either express or implied. See the License for the specific language governing permissions and limitations under the License.

Apache License

Draw SVG © Zoclee is Subject to the Apache License

Apache License Version 2.0, January 2004

<http://www.apache.org/licenses/>

TERMS AND CONDITIONS FOR USE, REPRODUCTION, AND DISTRIBUTION

1. Definitions.

"License" shall mean the terms and conditions for use, reproduction, and distribution as defined by Sections 1 through 9 of this document. "Licensor" shall mean the copyright owner or entity authorized by the copyright owner that is granting the License.

"Legal Entity" shall mean the union of the acting entity and all other entities that control, are controlled by, or are under common control with that entity. For the purposes of this definition, "control" means (i) the power, direct or indirect, to cause the direction or management of such entity, whether by contract or otherwise, or (ii) ownership of fifty percent (50%) or more of the outstanding shares, or (iii) beneficial ownership of such entity.

"You" (or "Your") shall mean an individual or Legal Entity exercising permissions granted by this License.

"Source" form shall mean the preferred form for making modifications, including but not limited to software source code, documentation source, and configuration files.

"Object" form shall mean any form resulting from mechanical transformation or translation of a Source form, including but not limited to compiled object code, generated documentation, and conversions to other media types.

"Work" shall mean the work of authorship, whether in Source or Object form, made available under the License, as indicated by a copyright notice that is included in or attached to the work (an example is provided in the Appendix below).

"Derivative Works" shall mean any work, whether in Source or Object form, that is based on (or derived from) the Work and for which the editorial revisions, annotations, elaborations, or other modifications represent, as a whole, an original work of authorship. For the purposes of this License, Derivative Works shall not include works that remain separable from, or merely link (or bind by name) to the interfaces of, the Work and Derivative Works thereof.

"Contribution" shall mean any work of authorship, including the original version of the Work and any modifications or additions to that Work or Derivative Works thereof, that is intentionally submitted to Licensor for inclusion in the Work by the copyright owner or by an individual or Legal Entity authorized to submit on behalf of the copyright owner. For the purposes of this definition, "submitted" means any form of electronic, verbal, or written communication sent to the Licensor or its representatives, including but not limited to communication on electronic mailing lists, source code control systems, and issue tracking systems that are managed by, or on behalf of, the Licensor for the purpose of discussing and improving the Work, but excluding communication that is conspicuously marked or otherwise designated in writing by the copyright owner as "Not a Contribution."

"Contributor" shall mean Licensor and any individual or Legal Entity on behalf of whom a Contribution has been received by Licensor and subsequently incorporated within the Work.

2. Grant of Copyright License. Subject to the terms and conditions of this License, each Contributor hereby grants to You a perpetual, worldwide, non-exclusive, no-charge, royalty-free, irrevocable copyright license to reproduce, prepare Derivative Works of, publicly display, publicly perform, sublicense, and distribute the Work and such Derivative Works in Source or Object form.

3. Grant of Patent License. Subject to the terms and conditions of this License, each Contributor hereby grants to You a perpetual, worldwide, non-exclusive, no-charge, royalty-free, irrevocable (except as stated in this section) patent license to make, have made, use, offer to sell, sell, import, and otherwise transfer the Work, where such license applies only to those patent claims licensable by such Contributor that are necessarily infringed by their Contribution(s) alone or by combination of their Contribution(s) with the Work to which such Contribution(s) was submitted. If You institute patent litigation against any entity (including a crossclaim or counterclaim in a lawsuit) alleging that the Work or a Contribution incorporated within the Work constitutes direct or contributory patent infringement, then any patent licenses granted to You under this License for that Work shall terminate as of the date such litigation is filed.

4. Redistribution. You may reproduce and distribute copies of the Work or Derivative Works thereof in any medium, with or without modifications, and in Source or Object form, provided that You meet the following conditions:

(a) You must give any other recipients of the Work or Derivative Works a copy of this License; and

(b) You must cause any modified files to carry prominent notices stating that You changed the files; and

(c) You must retain, in the Source form of any Derivative Works that You distribute, all copyright, patent, trademark, and attribution notices from the Source form of the Work, excluding those notices that do not pertain to any part of the Derivative Works; and

(d) If the Work includes a "NOTICE" text file as part of its distribution, then any Derivative Works that You distribute must include a readable copy of the attribution notices contained within such NOTICE file, excluding those notices that do not pertain to any part of the Derivative Works, in at least one of the following places: within a NOTICE text file distributed as part of the Derivative Works; within the Source form or documentation, if provided along with the Derivative Works; or, within a display generated by the Derivative Works, if and wherever such third-party notices normally appear. The contents of the NOTICE file are for informational purposes only and do not modify the License. You may add Your own attribution notices within Derivative Works that You distribute, alongside or as an addendum to the NOTICE text from the Work, provided that such additional attribution notices cannot be construed as modifying the License.

You may add Your own copyright statement to Your modifications and may provide additional or different license terms and conditions for use, reproduction, or distribution of Your modifications, or for any such Derivative Works as a whole, provided Your use, reproduction, and distribution of the Work otherwise complies with the conditions stated in this License.

5. Submission of Contributions. Unless You explicitly state otherwise, any Contribution intentionally submitted for inclusion in the Work by You to the Licensor shall be under the terms and conditions of this License, without any additional terms or conditions. Notwithstanding the above, nothing herein shall supersede or modify the terms of any separate license agreement you may have executed with Licensor regarding such Contributions.

6. Trademarks. This License does not grant permission to use the trade names, trademarks, service marks, or product names of the Licensor, except as required for reasonable and customary use in describing the origin of the Work and reproducing the content of the NOTICE file.
7. Disclaimer of Warranty. Unless required by applicable law or agreed to in writing, Licensor provides the Work (and each Contributor provides its Contributions) on an "AS IS" BASIS, WITHOUT WARRANTIES OR CONDITIONS OF ANY KIND, either express or implied, including, without limitation, any warranties or conditions of TITLE, NON-INFRINGEMENT, MERCHANTABILITY, or FITNESS FOR A PARTICULAR PURPOSE. You are solely responsible for determining the appropriateness of using or redistributing the Work and assume any risks associated with Your exercise of permissions under this License.
8. Limitation of Liability. In no event and under no legal theory, whether in tort (including negligence), contract, or otherwise, unless required by applicable law (such as deliberate and grossly negligent acts) or agreed to in writing, shall any Contributor be liable to You for damages, including any direct, indirect, special, incidental, or consequential damages of any character arising as a result of this License or out of the use or inability to use the Work (including but not limited to damages for loss of goodwill, work stoppage, computer failure or malfunction, or any and all other commercial damages or losses), even if such Contributor has been advised of the possibility of such damages.
9. Accepting Warranty or Additional Liability. While redistributing the Work or Derivative Works thereof, You may choose to offer, and charge a fee for, acceptance of support, warranty, indemnity, or other liability obligations and/or rights consistent with this License. However, in accepting such obligations, You may act only on Your own behalf and on Your sole responsibility, not on behalf of any other Contributor, and only if You agree to indemnify, defend, and hold each Contributor harmless for any liability incurred by, or claims asserted against, such Contributor by reason of your accepting any such warranty or additional liability.

END OF APACHE LICENSE TERMS AND CONDITIONS



Quick Start Guide

NOTE: Installation must be done from an account with administrator privileges. The computer must be connected to the Internet for license activation. If the computer will not have internet access after installation, please contact us for alternative activation instructions.

Acuity Pro installation will not erase or overwrite previous versions and there is no need to uninstall previous versions. To avoid inadvertently launching an old version of Acuity Pro, right click on Acuity Pro shortcuts on the desktop and click delete prior to installing Acuity Pro Version 10.

- Plug the remote receiver into a USB port and exit all other programs - please note direct line-of-sight is required between the front curved surface of the receiver and remote control.
- Download Acuity Pro from the link you received via email
- Double click the "AcuityPro10_Setup" file
- If a dialog window displays "Do you want to allow this app to make changes to your device?", click "Yes"
- The installer will guide you through installation
- When installation is complete, double click on the Acuity Pro desktop icon to launch Acuity Pro
- Acuity Pro License Agreement
 - Read and acknowledge the license agreement
 - Click "OK"
- Activation Wizard
 - Click "Continue"
 - Enter Activation Key from the email you received
 - Click "Activate" to complete activation and exit the Activation Wizard
- Mirrored Lane Setup - select mirrored or non-mirrored lane
- New Calibration
 - Select US or Metric units
 - Enter the lane distance
 - Use the HOTV card included with Acuity Pro to set the size of the acuity chart to 3.5" by 3.5"
 - Enter a name for the calibration
 - Click "OK" to save
- Acuity Pro will load
- If you are upgrading, you need to recalibrate, recreate custom hot key assignments or macros, and import previously added videos or photos.

Technical support is available by telephone at (580) 243-1301, Monday - Friday from 8:00 am - 5:00 pm, Central Prevailing Time. After hours support is available by email: info@acuitypro.com.

Thank you for choosing **Acuity Pro!**

Contact Information

Acuity Pro, Inc.
920 N Main St
Elk City, OK 73644

580-243-1301
info@acuitypro.com